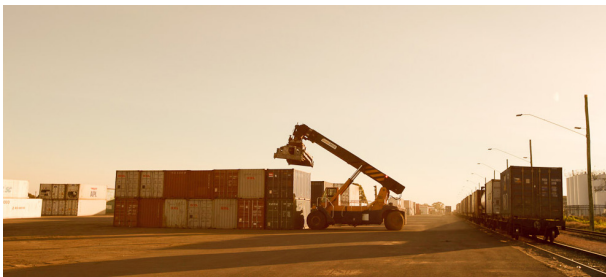


RAIL & ROAD

INTERMODAL

With an unrivaled network across road, rail, air, and sea, we provide you with Intermodal solutions to meet your needs. SEAWAY's experience in managing customised, end-to-end supply chains for our customers means we have the right, cost effective solution for your cargo.



SEAWAY INTERMODAL SERVICES

- 24/7 service - ready to help whenever you need it
- Cold chain experts
- SEAWAY's own Grain Packing Facilities
- DAWR accreditation
- Sunraysia specialists
- 3PL and 4PL Supply Chain management and supply chain engineering
- Palletised fruit collection from the farm gate
- Fumigation facilities for air and sea produce shipments (including China air protocol)
- Pre-cooling, produce inspections, container packing for cold treatment (protocol shipments)
- Rail and road wharf dispatch
- Sea and air freight management including full suite of documentation
- Transit cargo insurance
- Wine transportation management
- General Warehousing
- Fully Integrated IT systems with online visibility to stock management reports for our customers



GRAIN PACKING

In 2010, SEAWAY Intermodal expanded their business to include a containerised grain packing facility. While grain is being received and weighed our customers grain is tested for protein, moisture, screenings and falling number. A drive-over hopper and conveyor systems allows grain to easily be emptied and lifted into one of 12 silos on site where it is stored awaiting containerisation for export grain markets.

Benefits To Growers

- Access to increased number of buyers
- Ability to negotiate price on specifications
- Local cartage using own trucks
- Able to sell grain year round
- GTA trade rules are available to cover containerised grain

Benefits To Traders

- SEAWAY Intermodal - one stop shop service - grain from farm / warehouse, tested, DAWR, packed and freighted to end destination
- Perfect for sourcing grain directly off the farm
- Direct rail access to waterfront
- Grain Region - consistent quality year on year
- Capable of 40 containers plus per day - 5 to 6 containers per hour - quick turnaround

RAIL & ROAD OPERATIONS

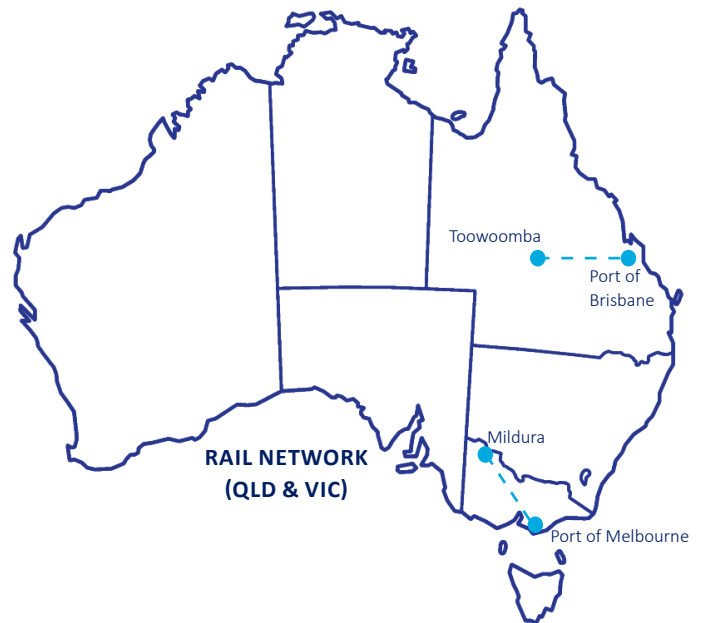
SEAWAY Intermodal operates the only containerised rail service between Sunraysia and the Port of Melbourne.

The Federal government has invested heavily in upgrading the freight line over recent years and SEAWAY Intermodal is pleased to announce we can now operate up to 5 weekly train services between Sunraysia and the Port of Melbourne with a large quantity of powered wagons per service. The rail line upgrades have exponentially increased our capacity to meet the region's growing freight task.



SEAWAY Intermodal is a truly 24/7 operation with a significant trucking fleet which supports our rail operations enabling deliveries to the wharf 7 days per week. Rail has many advantages over road modes of transportation including the ability to maximise the payload for every reefer container packed and there are fewer regulations around driver fatigue management.

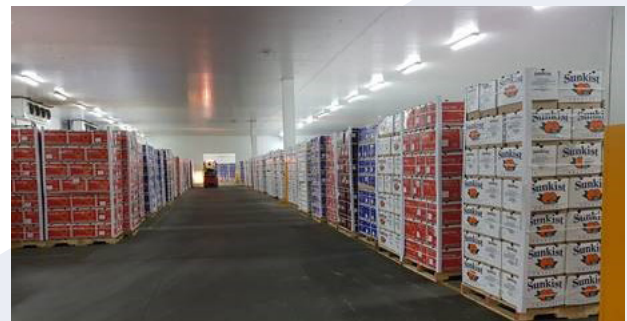
SEAWAY Intermodal makes the exporting process easy for our customers by offering an end to end solution for exporting produce via air or sea.



COLD STORAGE & WAREHOUSING

Located in the fruit bowl of Australia, SEAWAY Intermodal boasts the largest cool room and storage capacity in the Sunraysia region.

We provide our customers with unrivaled access to temperature controlled warehousing maintaining optimum storage and warehousing conditions for all fresh produce categories utilising the latest advancements in technology.



This includes over 3000 pallet spaces of cool room storage, 20 container loads of pull down operations per day and 21,000 square meters of general warehouse storage. SEAWAY Intermodal continues to invest in the needs of our customers located in the heartland of table grape and citrus growing country, having recently upgraded our facilities with additional cold storage and pull down capacity as we endeavour to satisfy the growing demands of our customers to achieve successful protocol completion every time.